



Community Profile

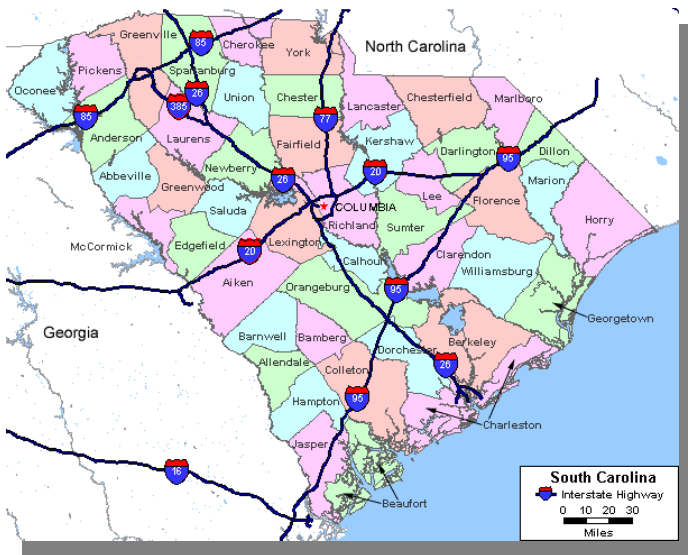
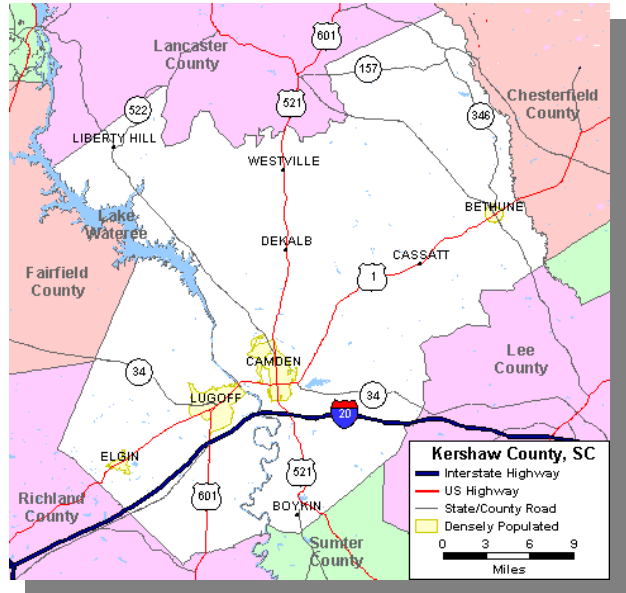
Table of Contents

Location	2
Transportation	3-5
Demographics	6-8
Labor & Employment	9-15
Industrial Directory	16-18
Tax Structure	19-21
Government & Utilities	22
Education	23-25
Quality of Life	26-28

Strategic Location



Kershaw County is located in the Midlands region of South Carolina. It is uniquely positioned halfway between New York and Miami, within 24 hour ground access to more than 70 percent of the U.S. market. The total area of the county is 739.3 square miles, with 16.1 square miles comprised of water. The county seat, which is the historic City of Camden, is located approximately 25 miles from the state's capital, Columbia. The elevation of Camden is 170 feet above sea level.



Transportation



Highways

Interstates in Kershaw County:

I-20 (4 interchanges)

Other Interstates near Kershaw County:

I-26, 34 miles

I-77, 22 miles

I-95, 40 miles

US Highways in Kershaw County

U.S. Hwy. 1

U.S. Hwy. 521

U.S. Hwy. 601

<i>Interstate</i>	<i>Connecting Cities</i>
I-20	Florence, SC to Dallas, TX
I-26	Charleston, SC to Asheville, NC
I-77	Columbia, SC to Cleveland, OH
I-95	Miami, FL to Bangor, ME

Travel Distance and Time

<i>City</i>	<i>Miles</i>	<i>Driving Time</i>
<i>Charlotte, NC</i>	110	2 hours
<i>Atlanta, GA</i>	245	4 hours
<i>Washington, DC</i>	448	7.5 hours
<i>Orlando, FL</i>	463	8 hours
<i>New York, NY</i>	690	12 hours
<i>Chicago, IL</i>	762	18 hours

Transportation



Woodward Field



Columbia Metropolitan Airport

Air Transportation

Woodward Field

- Located 3 miles northwest of Camden
- 2 paved runways (5,000 ft. and 3,000 ft)
- Charter service
- Tie down
- ADF approach
- Unicom
- 100 LL fuel
- Jet fuel and aircraft repairs.

Aircraft Operations

Woodward Field

- Avg. 40/day
- 51% transient general aviation
- 47% local general aviation
- 1% air taxi
- <1% military

Columbia Metropolitan Airport

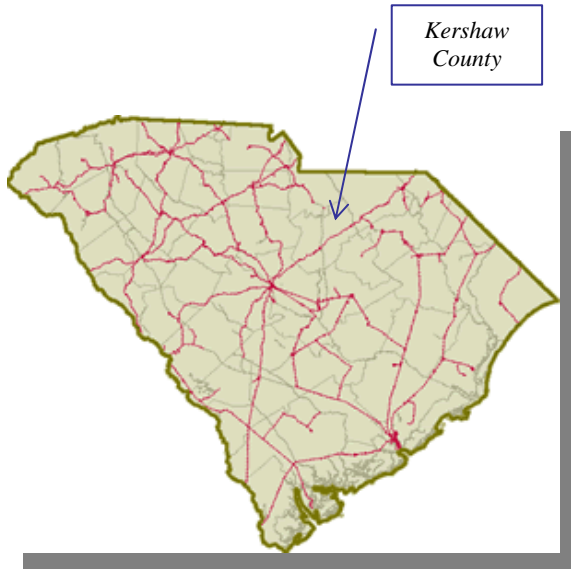
- Located 38 miles from Camden and offers regularly scheduled commercial airline services.
- There are 51 scheduled departures per day from Columbia Metropolitan and 9 non-stop flights available.
- The Columbia airport underwent a \$50 million renovation completed in 1998.
- Foreign Trade Zone #127
- Runway Lengths are 8,602 ft and 8,000 ft
- **Scheduled Airlines** – American Eagle, Continental Airlines, Delta Air Lines, United, US Airways
- **Air Freight Operators** - Mountain Air Cargo, Piedmont, Federal Express, UPS

United Parcel Service Hub

- The hub offers next day, second day and third day air service.
- The hub can process 42,000 packages an hour.

Charlotte Douglas International Airport

- Douglas International Airport is approximately 100 miles away in Charlotte offering direct flights across the United States and internationally.



South Carolina Rail Service



Port of Charleston

Rail

CSX provides rail service in Kershaw County.

Port Facility

The Port of Charleston is 124 miles from Kershaw County. It is the largest container port on the U.S. Southeast and Gulf coasts. It is the 4th largest in the United States for cargo value. With \$33 billion in cargo annually, Charleston ranks as the nation's sixth busiest seaport in dollar value of international shipments.

Population 1990-2010

Location	2000	2010	Difference	% Change
Kershaw County	52,647	61,697	9,050	17%
Bethune	352	334	(18)	-5%
Camden	6,682	6,838	156	2%
Elgin	806	1,311	505	63%
Lugoff	6,278	7,275	1,003	16%

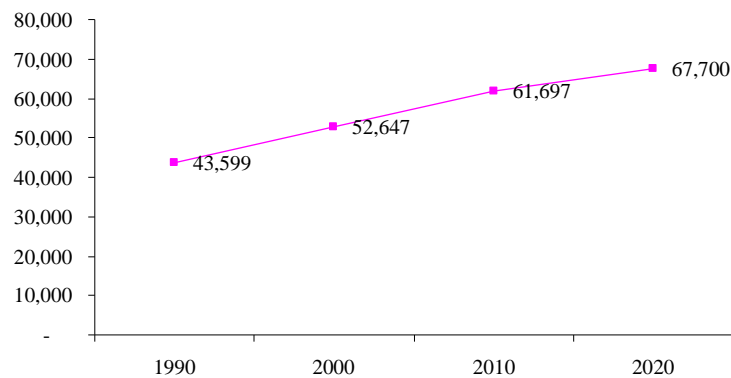
Source: Census 2010

Population within Commuting Distance

City of Camden	2000	2010	% Change '00-'10	2015 Projection
15 mile radius	56,688	65,317	15%	69,957
30 mile radius	459,261	511,784	11%	534,530

Source: Central SC Alliance

Population Kershaw County
1990-2020



Source: Census 2010

Kershaw County By Age Distribution

	Number	Percent
Under 5 years	4,110	6.7 %
5 to 9 years	4,088	6.6 %
10 to 14 years	4,288	7.0 %
15 to 19 years	4,182	6.8 %
20 to 24 years	3,281	5.2 %
25 to 34 years	6,578	12.5 %
35 to 44 years	8,577	16.3 %
45 to 54 years	7,753	14.7 %
55 to 59 years	2,870	5.5 %
60 to 64 years	2,299	4.4 %
65 to 74 years	3,850	7.3 %
75 to 84 years	2,243	4.3 %
85 years and over	703	1.3 %
18 years and over	38,897	73.9 %
21 years and over	37,008	70.3 %
62 years and over	8,076	15.3 %
65 years and over	6,796	12.9 %

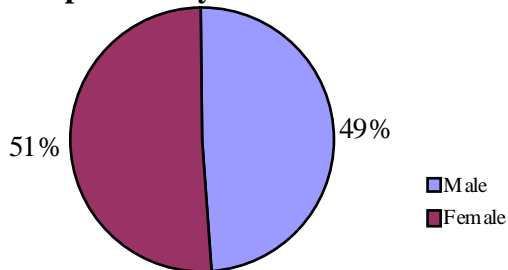
Source: Census 2010

Kershaw County Gender & Ethnicity 2010

Male	30,017
Female	31,680
White	43,965
Black	15,188
Indian or Alaska Native	197
Asian	302
Hispanic	2,298

Source: Census 2010

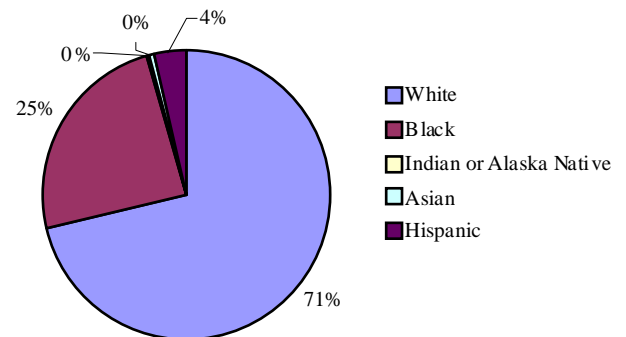
Population by Gender 2010



Source: Census 2010

**2010
Median
Age
40.2**

Population by Ethnicity 2010

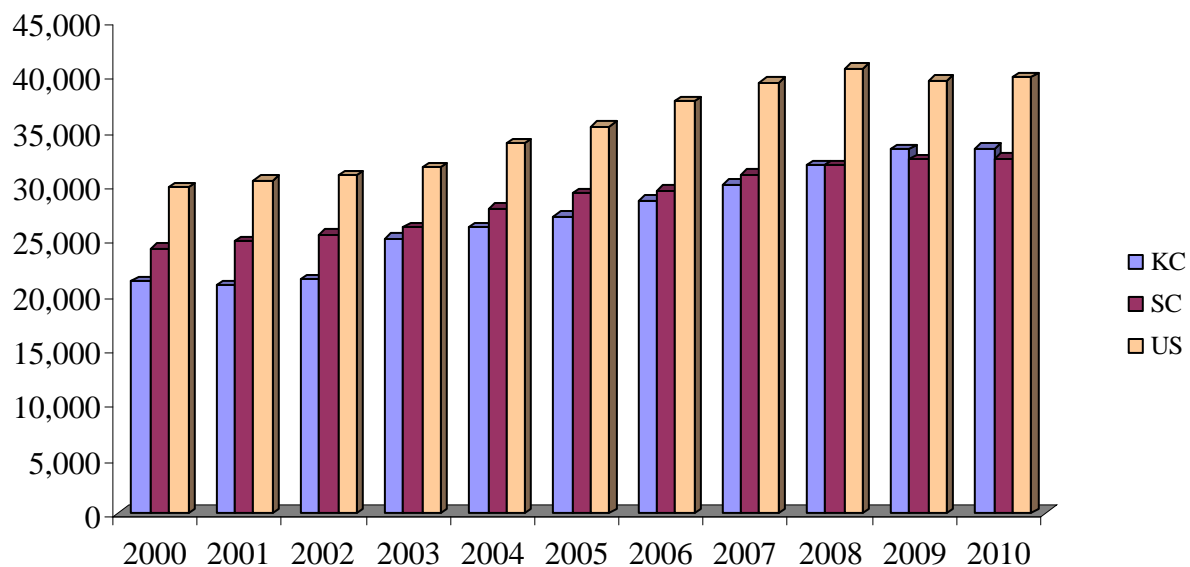


Source: Census 2010

Per Capita Income

	2000	2001	2002	2003	2004	2005	2006	2007	2008	2009	2010
KC	21,169	20,835	21,447	25,171	26,159	27,204	28,595	30,067	31,834	33,264	33,382
SC	24,273	24,886	25,502	26,132	27,908	29,226	29,515	31,013	31,884	32,338	32,505
US	29,770	30,472	30,906	31,632	33,881	35,424	37,698	39,458	40,673	39,626	39,929

Per Capita Income



KERSHAW COUNTY

Median Family Income 2007

\$52,896

Source: US Census

Median Household Income 2009

\$45,268

Source: US Census

Per Capita Income, 2010

\$33,382

Source: BEA

Labor and Employment

2010 Average Labor Force

	Total Labor Force	Unemployment Rate
Kershaw County	30,021	10.5%

Source: SC Employment Security Commission

Current Labor Force

Kershaw County	Total Labor Force	Unemployed	Unemployment Rate
May 2011	29,494	2,641	9.0%

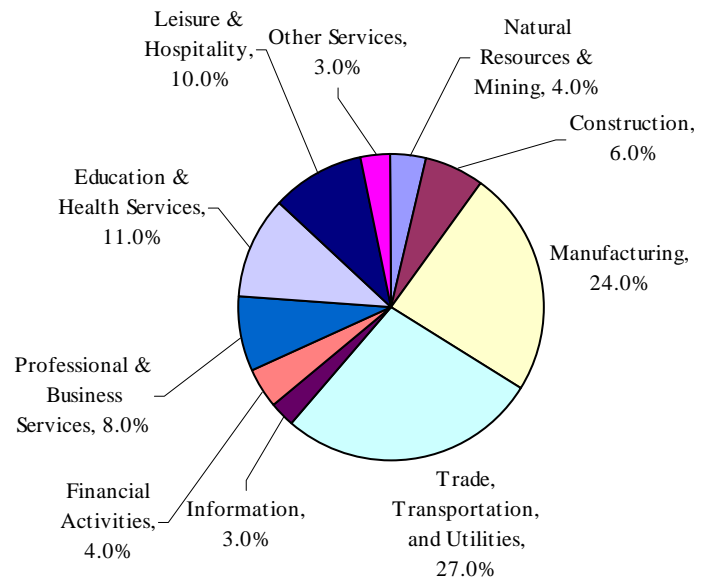
Source: SC Employment Security Commission

Employment by Industry Sector, 2010 2nd QT

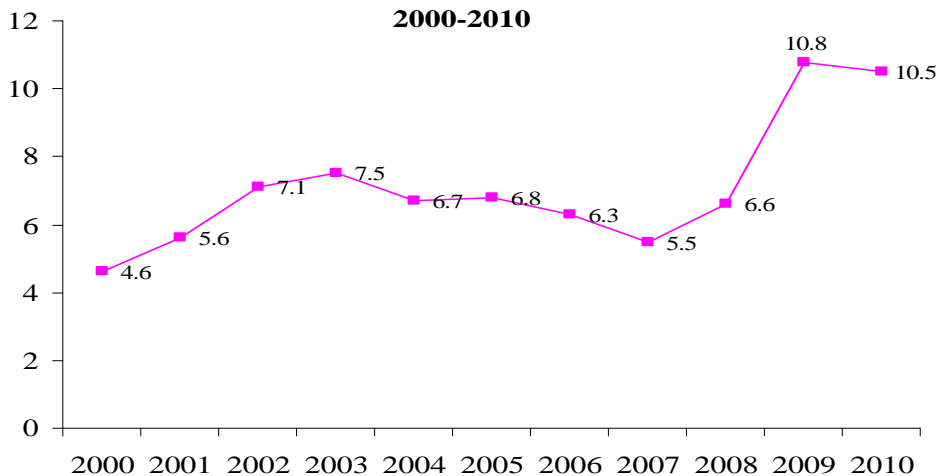
Total	11,915
Natural Resources & Mining	491
Construction	741
Manufacturing	2,874
Trade, Transportation, & Utilities	3,234
Information	298
Financial Activities	436
Professional & Business Services	899
Education & Health Services	1,334
Leisure & Hospitality	1,244
Other Services	364

Source: SC Employment Security Commission

Employment by Industry Sector 2010 2nd QT



Unemployment 2000-2010



Selected Labor Force Statistics

	<i>30 min. Drive time</i>	<i>45 min. Drive time</i>
Labor Force 2004	62,602	214,357
Change since 2000	-4,202	-14,074
Population		
Population 2004	142,040	476,677
Change since 2000	1,912	5,809
Projected 2010	57,114	211,504
Gender Distribution		
Male	69,519	233,156
Female	72,522	243,522
Age Distribution		
Ages 20-34	31,573	106,803
Ages 35-49	31,436	243,522
Ages 50-64	23,568	79,440
20-54 * prime working age	72,581	243,180
Highest Level of Educational Attainment		
High School	53,043	174,191
Some College	20,701	70,785
Associate Degree	8,153	28,339
Bachelors Degree	13,078	44,524
Post Bachelor	5,106	17,799

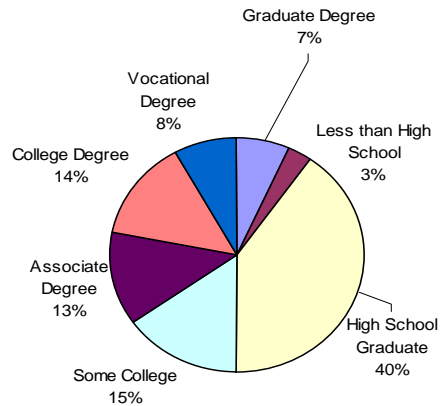
Labor Availability

Underemployment within the Kershaw County Labor Shed

# of underemployed workers	85,200
# of unemployed persons who are seeking work	43,300
# of persons who are not working but are contemplating reentering the workforce	14,800
Total # of workers available for employers	143,300

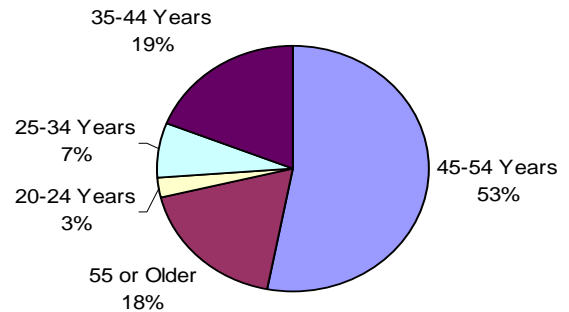
Source: The Pathfinders, Kershaw County Workforce Report, 2009

Education of Underemployed



Source: The Pathfinders, Kershaw County Workforce Report, 2009

Age of Underemployed



Employment Skills of Underemployed Workers in Kershaw County

<i>Skills*</i>	<i>Number of Persons</i>	<i>Percentage</i>	<i>Avg. Years of Experience</i>
<i>Customer Service</i>	52,000	61%	10
<i>Manufacturing/Assembly/Fabrication</i>	51,100	60%	12
<i>Warehouse/Distribution/Transportation</i>	46,900	55%	10
<i>Office Operations</i>	46,900	55%	11
<i>Maintenance/Installation/Repair</i>	30,700	36%	11
<i>Information Technology</i>	22,200	26%	7
<i>Medical/Health Sciences</i>	19,600	23%	9
<i>Call Center</i>	11,900	14%	6

- Individuals polled may have skills in more than one job classification

Source: The Pathfinders, Kershaw County Workforce Report, 2009

Commuting Patterns



Commuting Into Kershaw County:

County	Total Number of Commuters In		% of Total Commuters In	
	2006	2006	2000	% Increase
Richland	1,265	21.0		
Lee	710	11.8		
Sumter	699	11.6		
Lancaster	440	7.3		
Lexington	418	6.9		
Darlington	275	4.6		
Florence	223	3.7		
Fairfield	213	3.5		
Chesterfield	120	2.0		
All Other Locations	1663	27.6		
Total	6,026		4,446	35.5%

County	Total Number of Out Commuters		% of Total Out Commuters	
	2006	2006	2000	% Increase
Richland	7,471	51.6		
Lexington	1,321	9.2		
Sumter	594	4.1		
Lancaster	478	3.2		
Florence	418	2.9		
Mecklenburg, NC	396	2.7		
Darlington	361	2.5		
Chesterfield	308	2.1		
York	296	2.0		
All Other Locations	2,854	19.7		
Total	14,497		11,089	30.7%

Source: US Census Bureau, LED Origin-Destination Data Base (2nd Quarter 2002, 2003, 2004, 2005, and 2006)

Labor and Employment

Wages - Kershaw County - 2004

MANUFACTURING SECTORS

	<u>Kershaw County</u>	<u>South Carolina</u>
Manufacturing Total	\$ 43,302	\$ 44,932
Nonmetallic mineral product	\$ 25,625	\$ 44,448
Fabricated metal product	\$ 41,558	\$ 42,364
Transportation equipment	\$ 37,991	\$ 49,283
Furniture and related product	\$ 29,672	\$ 31,648
Textile mills	\$ 41,044	\$ 36,244
Textile product mills	\$ 19,915	\$ 29,412
Printing and related support activities	\$ 22,577	\$ 37,074
Chemical	\$ 60,197	\$ 55,021
Plastics and rubber products	\$ 30,721	\$ 47,713

OCCUPATIONAL WAGES

Average Hourly Wages of Employees by Selected Non-Exempt Occupations For Kershaw County Area

	Entry	Experienced	Average
Assemblers and Fabricators	8.06	9.35	10.50
Butchers and Meat Cutters	7.46	9.27	10.86
Chemical Equipment Operators	15.13	16.37	17.36
Logging Equipment Operators	9.43	10.58	12.75
Installation, Maintenance & Repair	9.95	13.68	16.76
Industrial Machinery Mechanics	12.42	14.42	16.83
Machinists	8.95	13.90	17.43
Packaging & Filling Machine Operators	8.37	10.40	11.32
Sewing Machine Operators	6.29	7.81	8.91
Textile, Cutting Machine Operators	6.90	10.17	14.35
Truck Drivers, Heavy & Tractor Trailer	10.41	14.51	17.07
Welders, Cutters & Smolderers	10.81	13.20	15.83
Woodworking Machine Setters	7.74	9.04	10.34

Average Salary of Employees by Selected Exempt Occupations for Kershaw County Area

	Entry	Experienced	Average
Chemical Engineers	\$54,580	\$68,680	\$82,340
Computer Programmers	\$32,660	\$43,800	\$55,300
Engineers, NEC	\$41,540	\$55,880	\$66,380
First Line Production Man & Sup	\$28,520	\$36,220	\$43,800
Industrial Engineers	\$46,500	\$54,200	\$64,060
Mechanical Engineers	\$45,860	\$52,800	\$64,240

Source: Occupational Wage Survey: SC Employment Security

	Average Weekly wage 2010 (3rd Quarter)	Average Annual Salary
KC	\$652	\$33,904
SC	\$710	\$36,920

Union Information

South Carolina is a right-to-work state that ranks the lowest in the nation in union membership as a percentage of non-agricultural employment. Currently, Kershaw County does not have any manufacturing unions active in the county.

Work Training

- Central Carolina Technical College in Sumter and Midlands Technical College in Columbia offer industrial training and occupational education to workers in Kershaw County.
- South Carolina's highly regarded readySC program, administered by the State Board for Technical and Comprehensive Education, is available for startup training customized for a company's needs. This training is state funded and, in most cases, is provided at no cost to the participating company.
- Industrial training efforts in South Carolina have proven to be extremely successful in terms of speed and utility to industry. Upon a company's decision to locate in the state, readySC will send industrial engineers to the plant headquarters to establish a pre-employment training program. A lead-time schedule is devised and arrangements are made for each job classification required by the company. readySC provides training manuals and selects qualified instructors for each class. Applicants are accepted for training only after careful screening and testing. Through careful planning and meaningful training programs, employees possess the ability to meet their job requirements on the first day of plant start-up, therefore making efficiency losses practically non-existent.

The readySC program acts as the company's outsourced human resources department. Recruiting and advertising, developing course curriculum and materials, educating trainers and potential new staff members are all part of the Ready SC program.

- From 1994 to December 2007, readySC trained 3,346 workers at 17 companies in Kershaw County which included:

Dana Corporation
Mancor of SC, Inc.
Wateree Dyeing & Finishing
Jubilee Embroidery
Heritage Embroidery
Blue Cross Blue Shield
Clariant LSM America
Target Corporation
Hengst

Oak Mitsui
BBA Fiberweb
Howden Buffalo, Inc.
SC Yutaka Technologies
Haier America Refrigerators
TB Kawashima USA, Inc.
Forgitron



Major Industries – 100+ Employees



<u>Company Name</u>	<u>No. of Emp.</u>	<u>Product</u>
Target Corporation	580	Distribution Center
UTI	320	Contractual Employer
SC Yutaka Technologies	154	Disk Brakes
Hengst	241	Automotive Filters
Haier America Refrigerators	225	Refrigerators
Weylchem	170	Organic Chemicals, Agr. Intermed.
Canfor Southern Pine	155	Dressed & Treated Lumber
TB Kawashima USA, Inc.	166	Textiles - Automotive
Ahlstrom Nonwovens	185	Nonwoven Textiles
Mancor Carolina, Inc.	165	Production Machine Shop
Covidien	179	Surgical Gauze
Dana Corporation	45	Chassis
Cogsdill Tool Products	123	Precision Fine Tools
Prestage Farms	100	Turkey Feed Mill
INVISTA		Synthetic Organic Fibers



Industrial Directory

Bethune

Company	Employees	Product	SIC
Ahlstrom Nonwovens	185	Nonwoven Textiles	2297
Bethune Pottery	3	Handmade Pottery Pottery Clay	3269 3295
Cal-Maine Foods, Inc.	65	Fresh Eggs	2015

Camden

Canfor Southern Pine	155	Dressed Lumber Treated Lumber	2421 2421
Chronicle Independent	35	Newspaper	2711
Colonial Iron Craft	2	Fire escapes, Commercial Iron	3799
Covidien	179	Surgical Gauze	2211
Davis Printing	13	Commercial printing	2759
DeRoyal Industries, Inc	40	Medical gauze Cheesecloth Diapercloth	3842 2211 2211
Eisenback Equipment Sales	25	Stainless steel fabricator	3443
Haier America Refrigerator Company	225	Refrigerators	3629
Hengst	241	Automotive Filters	3599
Image Printing	4	Commercial Printing	2759
Midlands Printing	10	Commercial Printing	2759
Oak Mitsui	80	Copper foil	3497
Praxair	20	Air Separation	2813
Prestage Farms Inc	100	Turkey Feed Mill	2048
Southeastern Electronics Assembly Services	15	Contract electronic assembly	3629
Thompson Logging, Inc	25	Logging, cutting, hauling	2411
Winslow Arms Company	2	Custom bolt action rifles	3484

Elgin

Weylchem	170	Agricultural Intermeds Organic Chemicals Pharmaceutical Intermeds Toll Production	2865 3869 2834 2869
Elgin Machine Corp.	8	Production work job shop	3599

HBD Thermoid Industries	92	V-belts	3052
Kapstone Charleston Kraft, LLC	10	Pine Chips	2421
		Fuel Wood Harvesting	2421
		Hardwood Chips	2426
		Fiber Fuel	2411
Westvaco Corporation	15	Pinewood chips	2421
		Hardwood chips	2421

Lugoff

C. Ray Miles Construction	55	Road Construction Sand, and Gravel	3272
Camden Concrete Co.	9	Ready mixed concrete	3273
Capitol Cabinets	14	Wood Kitchen Cabinets	2434
Carolina Covers	26	Awnings, Tarps, Boat covers	2394
Carolina Miscellaneous Metals	18	Miscellaneous steel products	3443
Cogsdill Tool Products	123	Roller burnishing tools	3545
		Mechanical deburring tools	3545
		Pipe alignment, fit up clamps	3494
		Precision reamers and fine boring tools	3545
Conner Industries	24	Wood products	2448
Dana Corporation	125	Chassis	3714
Hardaway Concrete Co	7	Ready mix concrete	3273
INVISTA		Synthetic organic fibers	2824
Jubilee Embroidery Co., Inc	80	Embroidery	2395
TB Kawashima USA, Inc.	166	Automotive Textiles	2262
Lugoff Ind. Textile Prod. Inc	40	Laundry bags	2393
Mancor Carolina, Inc	165	Production machine shop	3599
		Welding (heavy plate and assembly)	3549
		Platework fabricate, cutting, punching	3449
		Platework forming	3449
Midlands Tooling Systems	13	General Machine Shop	3599
		Tool, Die & Fixtures	3544
		Fabrication	3499
Praxair, Inc	22	Air separation - oxygen, nitrogen, argon	2813
Protective Packaging	40	Custom boxes	3499
Roy's Wood Products	46	Wood Products	2434
SC Yutaka Technologies, Inc	154	Disc Brakes	3417
		Suspension Parts	
Siobee Embroidery	2	Embroidery Products	2395
Target Corporation	580	Distribution Center	
The Bag Lady	20	Nylon bags	2393

		Feder, auto car seat covers	2396
		Hospital bags	2396
Unimin Corporation	15	Silica flour, sand	3295
UTI	320	Contractual employer	
Whidtec Inc.	18	Metal Fabrication	3443
Wolfe Mechanical & Equip. Co., Inc	45	ASME Code S.S. Vessels, reactors, and tanks	3443
		All phases of field erection	3441
		Chemical process equipment pumps and agitators	3561

Westville

Carolina Quarries	7	Granite products	3295
Kerwest	26	Logging	2411

2010-2011 Property Tax Millage Rates

County Operations	65.40
County Debt	9.10
School Operations	153.80
School Debt	<u>66.80</u>
Total	295.10

Additional Levies:

City of Camden.....	89.50 = 384.60
Town of Bethune.....	No Levy
Town of Elgin.....	No Levy
Lugoff Fire District.....	23.2 = 318.30
County Fire Service.....	9.8 = 304.90

Local Sales Tax Credit Factor:

County Operations.....	.001187
City of Camden.....	.002600

5 Year Abatement for New Industry or Industrial Expansion = 74.5

A significant local incentive offered in South Carolina provides businesses a five- year property tax abatement from county ordinary taxes. This relief is not applied to the school portion of property taxes. This abatement represents 25 percent of the total millage in Kershaw County.

Tax Overview

SAMPLE TAX COMPUTATION **Kershaw County - Lugoff District**

LAND AND BUILDING

Taxable Investment	\$1,000,000
Assessment Ratio (10.5%)	<u>.105</u>
Assessed Value	\$105,000
Millage Rate in Lugoff Fire District	.3209
Less 5-Year Exemption	<u>-.0745</u>
Adjusted Millage Rate	.2464
Assessed Value	\$105,000
Adjusted Millage Rate	<u>.2464</u>
TOTAL PROPERTY TAX - LAND AND BUILDING	\$25,872

MACHINERY AND EQUIPMENT

Gross Taxable Investment	\$2,000,000
Less First Year Depreciation (11%) (Percentage varies with type of equipment)	-220,000
Net Taxable Investment	\$1,780,000
Assessment Ratio (10.5%)	<u>.105</u>
Assessed Value	\$186,900
Millage Rate in Lugoff Fire District	.3209
Less 5-Year Exemption	<u>-.0745</u>
Adjusted Millage Rate	.2464
Assessed Value	\$186,900
Adjusted Millage Rate	<u>.2464</u>
TOTAL PROPERTY TAX - MACHINERY AND EQUIPMENT	\$46,052

TOTAL PROPERTY TAX - LAND AND BUILDING	\$25,872
TOTAL PROPERTY TAX - M AND E	<u>\$46,052</u>
TOTAL	\$71,924

TOTAL PROPERTY TAX - FIRST YEAR **\$71,924**

Tax Overview

SAMPLE TAX COMPUTATION **City of Camden - \$200,000 Residence**

Fair Market Value (FMV) of Property	\$200,000
Assessment Ratio (owner-occupied)	<u>4%</u>
Assessed Value	\$8,000

Assessed Value	\$8,000
Millage Rate	<u>x .3846</u>
Property Tax	\$3,076.80

State Property Tax Relief	\$1,230.40
Local Option Sales Tax (LOST) Credit – City	\$520.00
Local Option Sales Tax Credit – County	<u>+ 237.40</u>
Total Property Tax Relief	\$1,987.80

Property Tax	\$3,076.80
Lost Credit	<u>- 1,987.80</u>
	\$1,089.00

TOTAL PROPERTY TAX – RESIDENTIAL	\$1,089.00
---	-------------------

Government and Utilities

Government

The City of Camden is governed under a Council/Manager format. The Mayor and four council members are elected to serve four-year terms.

Kershaw County is governed under a Council/Administrator format. The Council consists of six members representing individual districts and a Chairman who is elected at-large. The County Council serves four-year terms.

Police & Fire Protection

Kershaw County Sheriff's Department:	45 certified officers
Camden Police Department:	27 certified officers
Camden Fire Department:	24 full-time personnel 16 volunteers Fire Insurance Rating:4
Lugoff Fire Department:	4 full-time personnel 30 volunteers Fire Insurance Rating:5

Utilities

Water	City of Camden	Lugoff Water District
Total Capacity:	6 mgd	6 mgd
Average Flow:	2.06 mgd	3 mgd
Excess Capacity:	3.94 mgd	3 mgd
Sewer	City of Camden	Lugoff Sewer District
Total Capacity:	3 mgd	.72 mgd
Permitted Flow:	1.95 mgd	.45 mgd
Excess Capacity:	1.05 mgd	.27 mgd

Electricity Suppliers: Black River Electric Coop, City of Camden, Progress Energy, Fairfield Electric Coop, Lynches River Electric

Natural Gas Suppliers: SCE&G

Education

The Kershaw County School District is accredited by the State Department of Education and the Southern Association of Colleges and Schools. The Board of Trustees, consisting of nine elected citizens, directs public education in the county.

<i>Superintendent</i>	<i>Dr. Frank Morgan</i>
Phone	(803) 432-8416
Number of Schools	20
Elementary/Middle/High	11 / 4 / 3 *
Total Enrollment	10,141

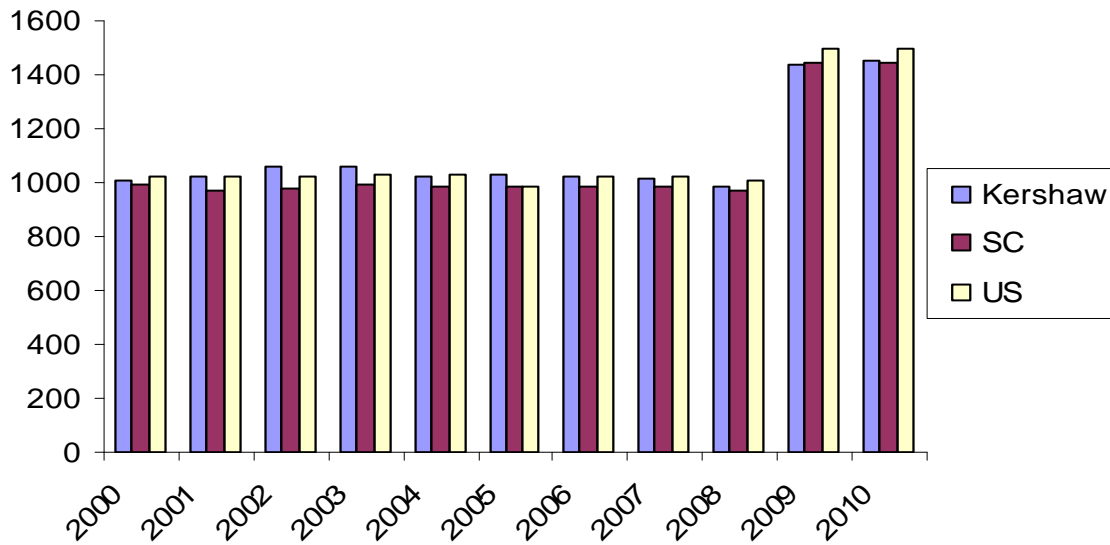
* 1 alternative school & ATEC

The Applied Technology Education Campus (ATEC) is one of the top-rated career centers in the nation. ATEC serves all three district high schools and also provides contract training for local industries. An adult education program, community interest programs and selected college distance education courses are offered at the campus. ATEC has an enrollment of 938 high school students and 965 adults enrolled in the adult program.

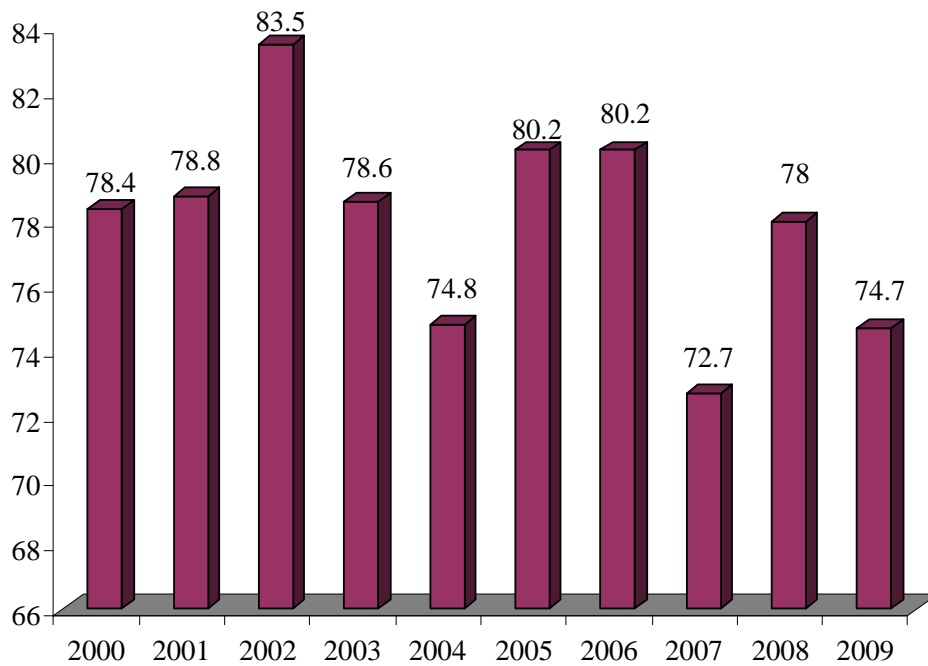
▪ Per Pupil Spending-	<i>\$7,854</i>
▪ Pupil/Teacher Ratio-	
Kindergarten	<i>20:1</i>
1-2 grade	<i>18:1</i>
3-8 grade	<i>25:1</i>
9-12 grade	<i>22:1</i>
▪ Internet access in every classroom in the school district	
▪ Student/Computer Ratio	
K-8	<i>1:4</i>
9-12	<i>1:1</i>

	2000	2001	2002	2003	2004	2005	2006	2007	2008	2009	2010
Kershaw County	1005	1021	1056	1058	1020	1030	1025	1013	988	1436	1453
South Carolina	966	974	981	989	986	986	985	984	973	1445	1143
United States	1019	1020	1020	1026	1026	1026	1021	1021	1009	1493	1497

SAT Scores



Graduation Rate



Colleges Serving the Area:

<i>Name</i>	<i>Location</i>	<i>Enrollment</i>
<i>University of South Carolina</i>	Columbia	29,334
<i>University of SC – Sumter</i>	Sumter	1,206
<i>Central Carolina Technical College</i>	Sumter & Kershaw	3,191
<i>Midlands Technical College</i>	Columbia	11,005
<i>Allen University</i>	Columbia	565
<i>Columbia College</i>	Columbia	1,500
<i>Benedict College</i>	Columbia	3,157
<i>Morris College</i>	Sumter	921

Private Schools Serving the Area:

<i>School</i>	<i>Grades Offered</i>	<i>Enrollment</i>	<i>City</i>	<i>Phone</i>
Camden Military Academy	7-12	208	Camden	(803) 432-6001
Ben Lippon	K-12	800	Columbia	(803) 786-7200
Montessori of Camden	K-5	99	Camden	(803) 432-6828
Cardinal Newman	7-12	443	Columbia	(803) 782-2814
Hammond School	K-12	905	Columbia	(803) 776-0295
Heathwood Hall	K-12	763	Columbia	(803) 765-2309
Thomas Sumter Academy	K-12	442	Sumter	(803) 499-3378
Robert E. Lee Academy	K-12	497	Bishopville	(803) 484-5532
Wilson Hall	K-12	830	Sumter	(803) 469-3475

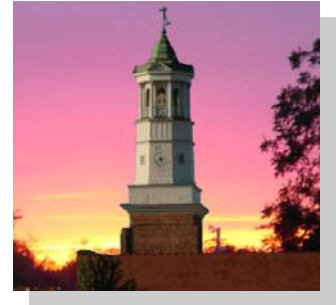
Financial Institutions

The county has 7 banks and 2 credit unions to serve the financial needs of the community. These banks have total assets of more than 3.2 billion.

Healthcare

The citizens of Kershaw County benefit from excellent health care.

KershawHealth in Camden offers state-of-the-art equipment with a personal touch, including CAT scan, MRI, cardiac catheterization, and stereotactic biopsy. In addition, KershawHealth offers a Health Resource Center for health education as well as a multi-disciplinary Pain Center. The labor and delivery wing recently was renovated to better serve expectant mothers. With 121 beds and 88 long-term-care beds, KershawHealth provides a high tech environment for 40 doctors and their patients. The hospital has just completed a \$15 million expansion to expand its intensive care unit, surgical services, health information management, cardiovascular diagnostic and cardiac rehabilitation. Nearby Columbia offers 3 full service hospitals.



Camden Clock Tower

Media

Kershaw County's local newspaper, the Chronicle-Independent, is published on Monday, Wednesday and Friday. The local radio stations are WPUB (FM), WCAM (AM) and WAME (AM). Kershaw County receives 7 television stations and cable is available throughout most of the county.

Accommodations

Kershaw County has 11 hotels/motels, 5 bed and breakfasts, 1 inn, and meeting facilities available for up to 250 people.

Recreation

Camden has a year-round recreation program and 178 acres of city parks. N.R. Goodale State Park, two miles from Camden, is a 2,300 acre park with two lakes, picnic and game facilities. Wateree Lake is a 22-mile navigable lake for water sports and fishing. Golf, hunting, sporting clays, steeplechase horse racing and horseback riding are available. Field trials for dogs and fox hunting are conducted in the area. Kershaw County has 24 parks, 24 tennis courts, 10 ballparks, 2 public golf courses, 1 private country club, 3 pools, 2 theaters, and 1 bowling alley. The University of South Carolina and the Columbia Bombers Baseball Team provide spectator sports for the area.



Places To Visit In Kershaw County



Kershaw-Cornwallis House

Historic Camden is a 98 acre outdoor museum complex open to the public for guided tours. Excavations revealed the remains of the old town, six small surrounding forts, the Kershaw-Cornwallis House (where Cornwallis headquartered) and a large powder magazine. Several examples of early American architecture are found at Historic Camden.

Camden Historic District: Encompasses more than 60 gracious old homes and buildings recognized by the Kershaw County Historical Society. Both walking and driving tours have been created for the area.

Camden Archives and Museum: The original town clockworks, circa 1825, along with other historic items are on display at the Museum. Visitors are always welcome.

Fine Arts Center: A full menu of cultural activities keeps county residents entertained. The Fine Arts Center of Kershaw County, located on five acres in downtown Camden, has one of the most comprehensive arts programs in the state. The complex includes a restored 155-year-old house for meetings and offices, a 300 seat auditorium and art gallery, and a 6,700 square foot Arts Education Building. Over 50,000 people participate each year in plays, concerts, receptions, special events, art classes, and workshops at the Fine Arts Center.

The National Steeplechase Museum: Decades of competition and pageantry are displayed in The National Steeplechase Museum's exhibit halls and library. This facility is the only museum in North America dedicated to Steeplechase racing.

Organizations

Many civic clubs attest to the pride that Kershaw Countians take in their community. Some examples of active organizations are: Junior Welfare League; Kiwanis Club; Rotary Club; Lions Club; several Garden Clubs; American Red Cross; American Cancer Society; American Heart Association and the Newcomers Club.

Religion

Religion is an important part of life in Kershaw County with 95 Protestant churches, 1 Roman Catholic Church and 1 Jewish synagogue. During the summer months, non-denominational services are held in a casual setting on the shore of Lake Wateree.

Festivals and Events

The **Carolina Cup International Steeplechase** is one of the world's premier equestrian events. Some of the finest horses are featured each Spring at the "Cup" - not only "jumpers", but champion "flat track" horses are trained in Camden. The Carolina Cup is also known as South Carolina's largest cocktail party! The Carolina Cup is held in late March or early April of each year.



The **Colonial Cup** is held in November and challenges even the fittest horse and most skilled jockey. The victor is awarded the prestigious South Carolina Jockey Club Gold Cup - a cup with a legacy pre-dating the Civil War.

Revolutionary War Field Days is held each November on the grounds of historic Camden and features a Reenactment of the Battles of Camden and Hobkirk Hill. In addition to the battles, the event features local crafts, living history demonstrations and regimental drills.

The Carolina Downhome Blues Festival offers three jam-packed days of the most authentic, gritty blues artists in the world. Events include Happy Hour performances, Early Evening Concerts, and performances in seven different venues around Kershaw County.

The Elgin Catfish Stomp, held in December, welcomes thousands to sample the tantalizing stew made from prime local catfish. Live country music, square dancing and good-hearted competitions round out the thoroughly unique day.

The Chicken Strut in Bethune is a three-day festival held in April to recognize Bethune as the largest egg producer in the United States. Events include concerts, square dancing, sky diving demonstrations, craft fairs and pony rides.

Climate

The average annual temperature in Kershaw County is 61.6 degrees Fahrenheit. In January, the average temperature is 42.0 degrees Fahrenheit, while in July the average temperature is 79.7 degrees Fahrenheit. The mean yearly precipitation is 49.1 inches; the greatest monthly average occurs in July (5.8 inches) and the least occurs in November (2.4 inches). The average growing season is 219 days.

Kershaw County Economic Development Office
80 Campus Drive / PO Box 763
Camden, SC 29021
(803) 425-7685
www.kershawsc.org